

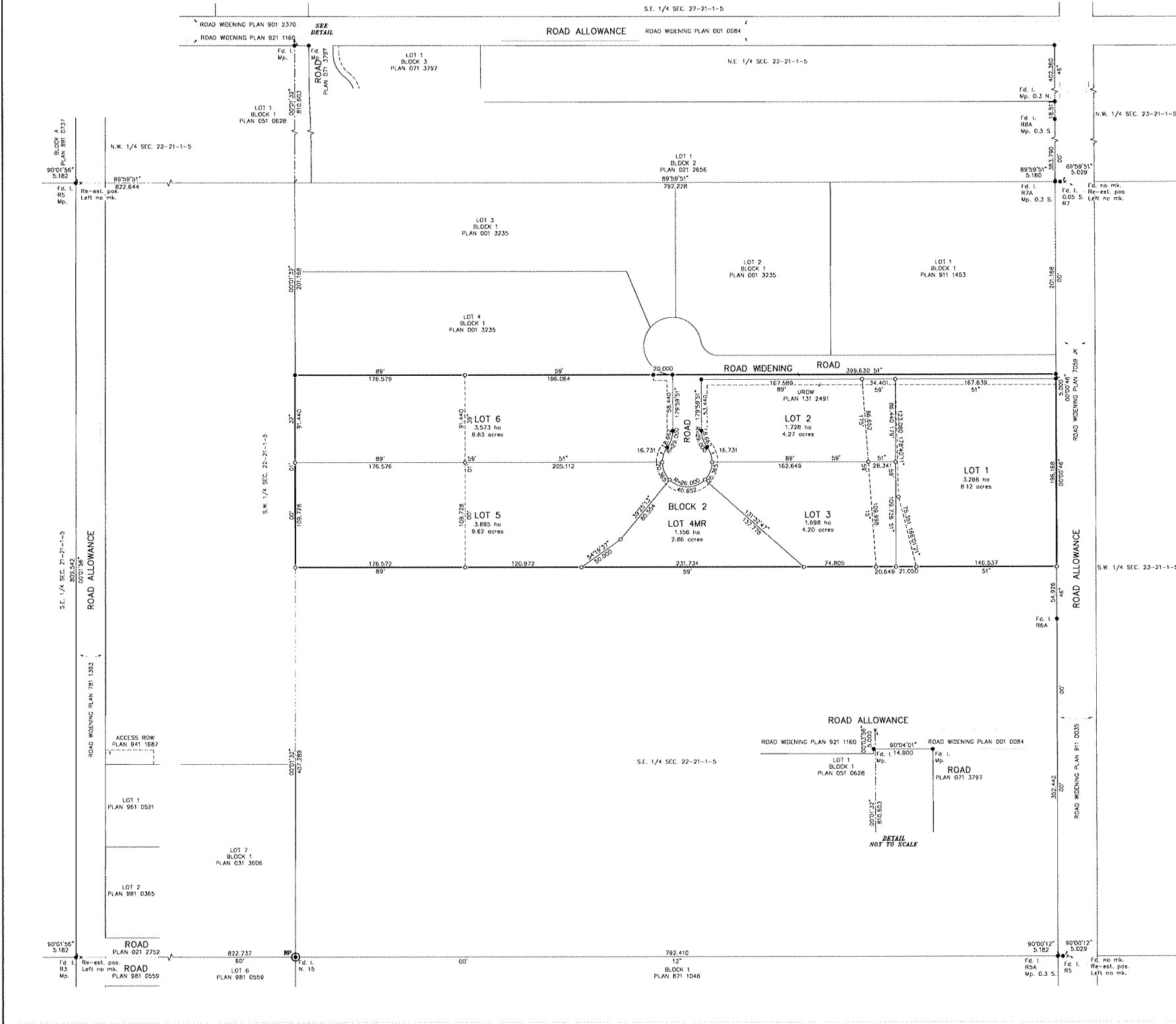
REGISTRAR  
LAND TITLES OFFICE

PLAN NO. **141 0534**

ENTERED AND REGISTERED  
ON **February 18, 2014**

INSTRUMENT NO: **141 043 209**

*Keith Stang*  
A.D. REGISTRAR



**M.D. of FOOTHILLS No. 31**  
- ALBERTA -

PLAN SHOWING SURVEY of  
**SUBDIVISION**  
affecting S.E. 1/4 SEC. 22-21-1-5  
in S.E. 1/4 SEC. 22, TWP. 21, RGE. 1, W5M  
BY: JOHN W. LOVSE, A.L.S. 2012



**LEGEND**

STATUTORY IRON POSTS FOUND SHOWN THUS: ●  
STATUTORY IRON SURVEY POSTS PLANTED SHOWN THUS: ○ MARKED P188  
ALL DISTANCES ARE IN METRES AND DECIMALS THEREOF.  
DISTANCES ON CURVED BOUNDARIES ARE ARC DISTANCES  
BEARINGS ARE GRID AND DERIVED FROM GPS  
THE GRID-REFERENCED POINT IS FIG. 1, N. 15 AND SHOWN THUS: ○ RP  
PUBLISHED 31W NAD83 COORDINATES: 5628200.63m N, -4188.67m E

DATUM USED: NORTH AMERICAN DATUM 1983  
PROJECTION USED: 3° TRANSVERSE MERCATOR  
REFERENCE MERIDIAN USED: 114°  
CONVERSION FACTOR USED: 0.999721

ALBERTA SURVEY CONTROL MONUMENTS SHOWN THUS: ●  
AREA TO BE REGISTERED BY THIS PLAN SHOWN OUTLINED THUS: \_\_\_\_\_  
AND CONTAINS 5 LOTS, 1 RD., ROAD WIDENING AND ROAD, TOTALING 15.938 HECTARES

- A.L.S. - ALBERTA LAND SURVEYOR
- ASCAM - ALBERTA SURVEY CONTROL MARKER
- B.P. - BLOCK
- CL.M. - CHECK MEASURE
- Chd - CHORD
- C.S. - COUNTER SINK
- D.H. - DRILL HOLE
- E - EAST
- Est - ESTABLISHED
- Fd - FOUND
- ha - HECTARES
- I - STATUTORY IRON POST
- I. Bar - IRON BARS
- L.S.D. - LEGAL SUBDIVISION
- m - METRES
- M - MERIDIAN
- mk. - MARK
- M.P. - MARKER POST
- M.D. - MUNICIPAL DISTRICT
- MR - MUNICIPAL RESERVE
- N - NORTH
- NTS - NOT TO SCALE
- OD - OVERLAND DRAINAGE
- OP - STANDARD C.L.S. POST (BRASS CAP)
- P.I. - POINT OF INTERSECTION
- PL - PLANTED
- Pos. - POSITION
- PUL - PUBLIC UTILITY LOT
- R - RADIUS
- R - RADIAL
- RCE - RANGE
- Re-est. - RE-ESTABLISHED
- ROW - RIGHT OF WAY
- S - SOUTH
- SEC - SECTION
- Sq. - SQUARE
- TWP. - TOWNSHIP
- U - UTILITY
- W - WEST
- Wo. - WOODEN POST
- WT. - WITNESS
- ∠ - CENTRAL ANGLE OF CURVE



**SURVEYOR**

NAME: JOHN W. LOVSE  
SURVEYED BETWEEN THE DATES OF  
FEBRUARY 19, 2007  
AND DECEMBER 9, 2013  
IN ACCORDANCE WITH THE  
PROVISIONS OF THE SURVEYS ACT

**REGISTERED OWNERS**

ENRSK MANAGEMENT SERVICES INC.

**SUBDIVISION AUTHORITY**

NAME: M.D. OF FOOTHILLS  
FILE NO.: F2104-22 SE

TERRAMATIC TECHNOLOGIES INC. PHONE (403) 214 3655  
#12-5080-12A S1 S.L., CALGARY E-MAIL: survey@terramatic.com

DRAWING FILE NAME: 12170445 CLIENT: BADRL CONSULTING LTD.  
DRAWN BY: TP  
CHECKED BY: TP

FILE No.: 12170445

SOUTH ALBERTA LAND REGISTRATION DISTRICT  
 REGISTRAR  
 LAND TITLES OFFICE  
 PLAN NO. **141 0536**  
 ENTERED AND REGISTERED  
 ON **February 18 2014**  
 INSTRUMENT NO.: **141 043 211**  
*Keith Stang*  
 A.D. REGISTRAR



**M.D. of FOOTHILLS No. 31**  
 - ALBERTA -  
 PLAN SHOWING SURVEY of  
**ENVIRONMENTAL RESERVE**  
 affecting LOTS 5 and 6, BLOCK 2, PLAN 121 141 0534  
 in S.E. 1/4 SEC. 22, TWP. 21, RGE. 1, W5M  
 BY: JOHN W. LOVSE, A.L.S. 2012



**LEGEND**  
 STATUTORY IRON POSTS FOUND SHOWN THUS: ●  
 STATUTORY IRON SURVEY POSTS PLANTED SHOWN THUS: ○ MARKED P188  
 ALL DISTANCES ARE IN METRES AND DECIMALS THEREOF.  
 DISTANCES ON CURVED BOUNDARIES ARE ARC DISTANCES.  
 BEARINGS ARE GRID AND DERIVED FROM GPS  
 THE GEO-REFERENCED POINT IS Fed. N. 18 AND SHOWN THUS: ○ RP  
 PUBLISHED 31W NAD83 COORDINATES: 5628260.63m N, -4189.67m E  
 DATUM USED: NORTH AMERICAN DATUM 1983  
 PROJECTION USED: 3° TRANSVERSE MERCATOR  
 REFERENCE MERIDIAN USED: 114°  
 COMBINED FACTOR USED: 0.999721  
 ALBERTA SURVEY CONTROL MONUMENTS SHOWN THUS: ⊙  
 AREA TO BE REGISTERED BY THIS PLAN SHOWN OUTLINED THUS: \_\_\_\_\_  
 AND CONTAINS 3.552 HECTARES

- A.L.S. - ALBERTA LAND SURVEYOR
- ASCM - ALBERTA SURVEY CONTROL MARKER
- Bk. - BLOCK
- Calc. - CALCULATED DISTANCE
- Chk. - CHECK MEASURE
- Chd. - CHORD
- C.S. - COUNTER SUNK
- D.H. - DRILL HOLE
- E. - EAST
- Est. - ESTABLISHED
- Fe. - FOUND
- hc. - HECTARES
- L. - STATUTORY IRON POST
- L. Bar - IRON BAR
- L.S.D. - LEGAL SUBDIVISION
- m. - METRES
- M. - MERIDIAN
- mk. - MARK
- Mp. - MARKER POST
- M.D. - MUNICIPAL DISTRICT
- WR - MUNICIPAL RESERVE
- N. - NORTH
- NTS - NOT TO SCALE
- OD - OVERLAND DRAINAGE
- P. - STANDARD C.S. POST (BRASS CAP)
- P.I. - POINT OF INTERSECTION
- Pl. - PLANNED
- Pos. - POSITION
- PUL - PUBLIC UTILITY LOT
- R. - RADIAL
- R. - RADIUS
- Re. - RE-ESTABLISHED
- ROW - RIGHT OF WAY
- S. - SOUTH
- SEC. - SECTION
- sq. - SQUARE
- TWP. - TOWNSHIP
- U. - UTILITY
- W. - WEST
- Wo. - WOODEN POST
- Wt. - WITNESS
- Δ - CENTRAL ANGLE OF CURVE

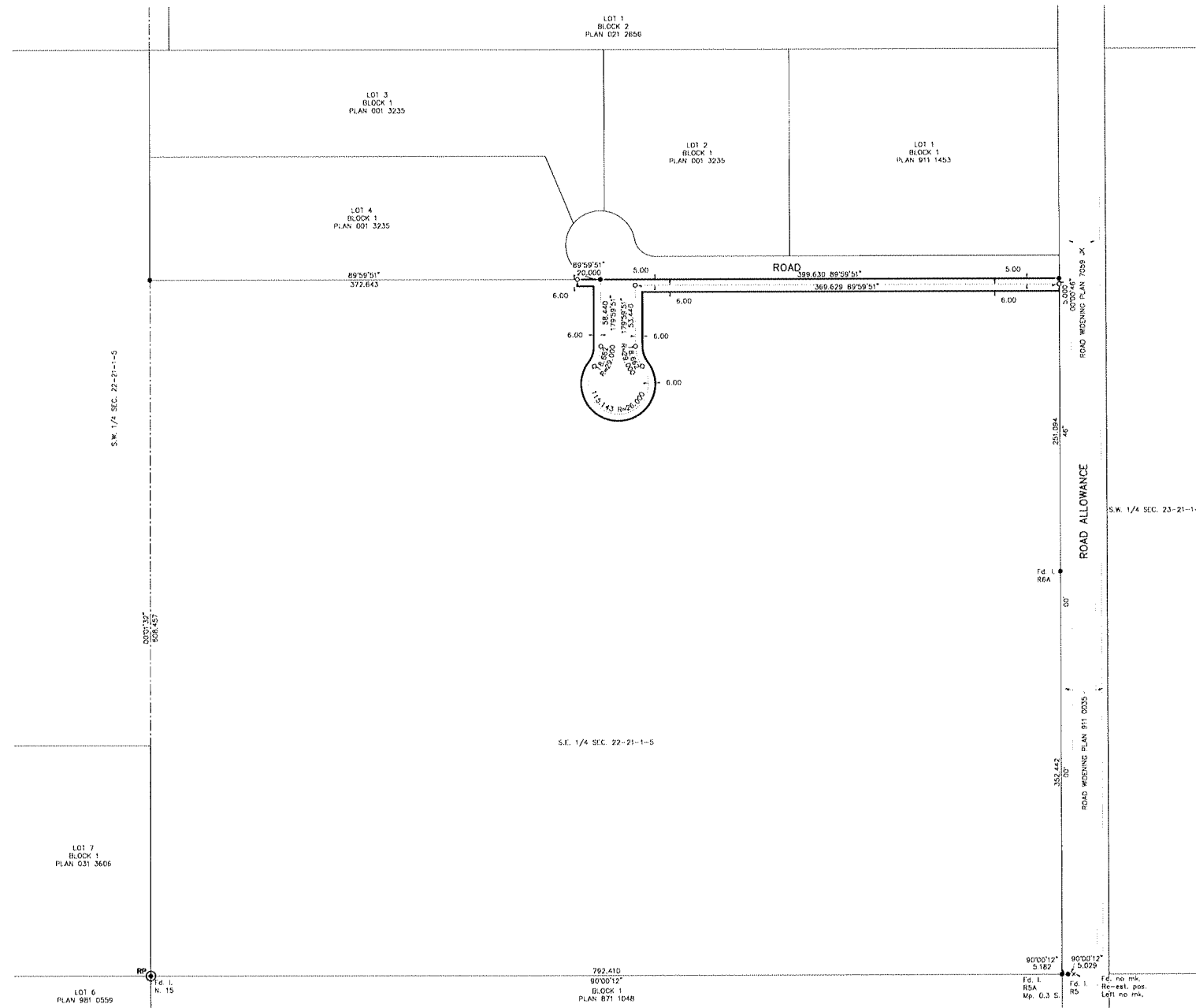


**SURVEYOR**  
 NAME: JOHN W. LOVSE  
 SURVEYED BETWEEN THE DATES OF  
 FEBRUARY 12, 2007  
 AND DECEMBER 9, 2013  
 IN ACCORDANCE WITH THE  
 PROVISIONS OF THE SURVEYS ACT

**REQUESTED BY**  
 ENRISK MANAGEMENT SERVICES INC.

**TERRAMATIC TECHNOLOGIES INC.** PHONE (403) 214 3655  
 #12-5080-12A ST. S.E., CALGARY E-MAIL: survey@terramatic.com

DRAWING FILE NAME: 1217044ER CLIENT: ENRISK CONSULTING LTD.  
 DRAFTED BY: JWL FILE No.: 1217044ER



**M.D. of FOOTHILLS No. 31**  
- ALBERTA -

PLAN SHOWING SURVEY of  
**UTILITY RIGHT OF WAY**  
affecting S.E. 1/4 SEC. 22-21-1-5  
in S.E. 1/4 SEC. 22, TWP. 21, RGE. 1, W5M  
BY: JOHN W. LOVSE, A.L.S. 2012

SCALE : 1 : 2000



**LEGEND**

STATUTORY IRON POSTS FOUND SHOWN THIS: ●  
STATUTORY IRON SURVEY POSTS PLANTED SHOWN THIS: ○ MARKED P188  
ALL DISTANCES ARE IN METRES AND DECIMALS THEREOF.  
DISTANCES ON CURVED BOUNDARIES ARE ARC DISTANCES.  
BEARINGS ARE GND AND DERIVED FROM GPS  
THE GEO-REFERENCED POINT IS Fig. 1, N. 15 AND SHOWN THIS: ○ RP  
PUBLISHED 3TM NAD83 COORDINATES: 5628200.63m N, -4185.67m E

DATUM USED: NORTH AMERICAN DATUM 1983  
PROJECTION USED: 3° TRANSVERSE MERCATOR  
REFERENCE MERIDIAN USED: 114°  
COMBINED FACTOR USED: 0.999721

ALBERTA SURVEY CONTROL MONUMENTS SHOWN THIS: ●  
AREA TO BE REGISTERED BY THIS PLAN SHOWN OUTLINED THIS  
AND CONTAINS 0.992 HECTARES

- A.L.S. - ALBERTA LAND SURVEYOR
- ASEM - ALBERTA SURVEY CONTROL MARKER
- BK - BLOCK
- calc. - CALCULATED DISTANCE
- ck.m. - CHECK MEASURE
- CH - CHERRY
- C.S. - COUNTER SUNK
- D.H. - DRILL HOLE
- E - EAST
- EAB - ESTABLISHED
- FD - FOUND
- ha. - HECTARES
- I. - STATUTORY IRON POST
- I. Bar - IRON BAR
- L.S.D. - LEGAL SUBDIVISION
- m - METRES
- M - MERIDIAN
- mk. - MARK
- Mp. - MARKER POST
- M.D. - MUNICIPAL DISTRICT
- M.R. - MUNICIPAL RESERVE
- N - NORTH
- NTS - NOT TO SCALE
- OD - OVERLAND DRAINAGE
- P. - STANDARD C.L.S. POST (BRASS CAP)
- P.I. - POINT OF INTERSECTION
- PL - PLANTED
- Pos. - POSITION
- PUL - PUBLIC UTILITY LOT
- R - RADIUS
- TR - RADIAL
- RGE - RANGE
- Re-est. - RE-ESTABLISHED
- RDm - RIGHT OF WAY
- S - SOUTH
- SEC - SECTION
- sq. - SQUARE
- TWP. - TOWNSHIP
- U - UTILITY
- W - WEST
- Wb. - WOODEN POST
- Wt. - WITNESS
- A - CENTRAL ANGLE OF CURVE



**SURVEYOR**

NAME: JOHN W. LOVSE  
SURVEYED BETWEEN THE DATES OF  
FEBRUARY 12, 2007  
AND JULY 4, 2013  
IN ACCORDANCE WITH THE  
PROVISIONS OF THE SURVEYS ACT



**REQUESTED BY**

ENRISK MANAGEMENT SERVICES INC.

TERRAMATIC TECHNOLOGIES INC. PHONE (403) 214 3655  
#12-5080-12A ST. S.E., CALGARY E-MAIL: survey@terramatic.com  
DRAWING FILE NAME: 1217044UR CLIENT: ENRISK CONSULTING LTD  
CREATED BY: TERRAMATIC TECHNOLOGIES INC. FILE No.: 1217044UR  
CHECKED BY: KL/AL

